

## ATM2004D

Product photo:



Dimension:	98(L)x60(W)x14(H)
V.A:	76(L)x25.2(W)
Dotsize:	0.55x0.55
Dotpitch:	3.55 x 5.35
Controller/Driver	S6A0069
	5 x 8 with Cursor Dots
	1/16 Duty, 1/5 Bias, 20CHAR x 4LINE

### OPTIONS FOR SERIES

#### PORLARIZER Type

- R=Reflective
- F=Transflective
- M=Transmissive, Positive
- N=Transmissive, Negative

#### LCD PANEL

- T = TN type
- G = STN gray type
- Y = STN yellow-green type
- B = STN blue type
- F = FSTN type

#### BACKLIGHT TYPE

- L=LED backlight (array)
- S=LED backlight (side)
- E=EL backlight

#### VIEWING ANGLE

- B=Bottom View ( 6:00 )
- T=Top View ( 12:00 )

#### TEMPERATURE

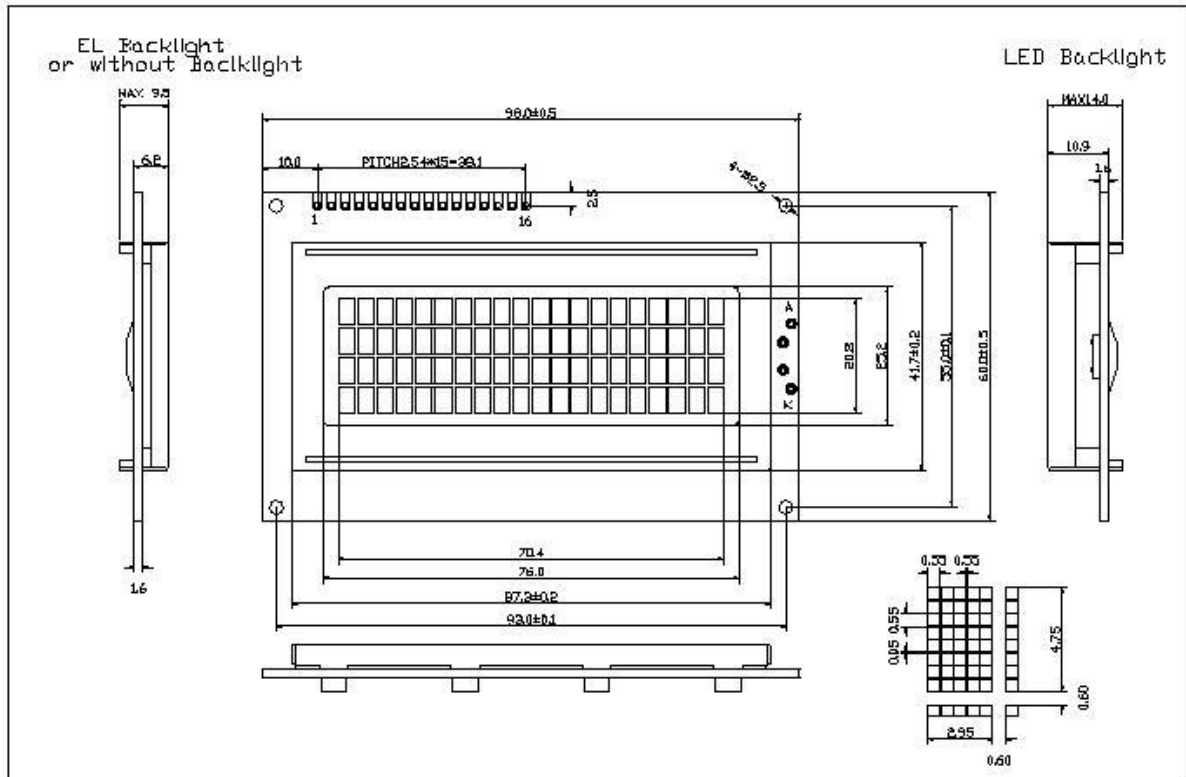
- S = 0~50 C
- W = -20 ~ 70 C

# ATM2004D SERIES STANDARD CHARACTER LCD MODULES

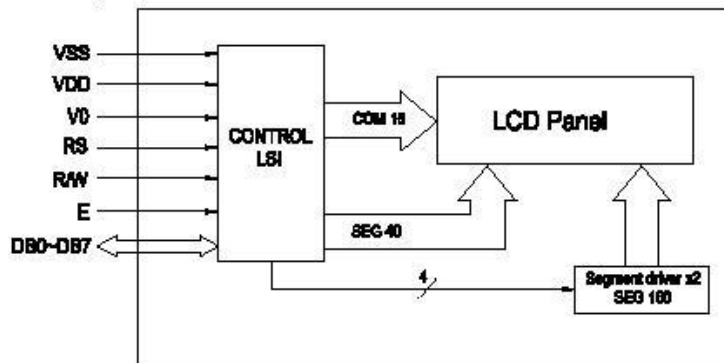
- \* 5 x 8 with Cursor Dots
- \* View Angle (6:00)
- \* 1/16 Duty, 1/5 Bias, 20CHAR x 4LINE
- \* LED Backlight (Yellow green)

- \* Transflective
- \* STN (Yellow green)
- \* Controller/Driver (S6A0069)
- \* Operating Temp (-20°C ~70°C)

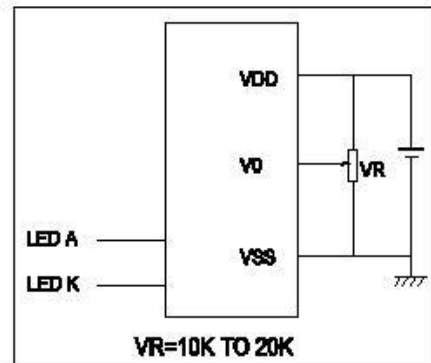
## External Dimensions



## Block Diagram



## Power Supply



## Mechanical Specifications

## Electrical Specifications

Item	Description(mm)	Item	Symbol	Min	Typ	Max	Unit
Size	98(L)x60(W)x14(H)	Supply Voltage for Logic	VDD	4.5	5.0	5.5	V
V.A	76(L)x25.2(W)	Supply Voltage for LCD	VLCD	4.0	4.5	5.0	V
Character Pitch	3.55 x 5.35	Supply Current for Logic	IDD		1.0	2.0	mA
Dot Size	0.55*0.55	Supply Current for LED	IF			80	mA

## Interface Signals---- J1

Pin	Symbol	Level	Description	Pin	Symbol	Level	Description
1	VSS	0V	Ground	7~14	DB0~DB7	H/L	Data Bus Line
2	VDD	+5V	Supply Voltage for Logic	15	A	--	Back Light anode:+4.2V
3	V0	--	Operating Voltage for LCD	16	K	--	Back Light cathode:0V
4	R/S	H/L	H: Data L: Instruction Code				
5	R/W	H/L	H: Data Read L: Data Write				
6	E	H,H-L	Enable Signal				