

TOSHIBA BIPOLAR LINEAR INTEGRATED CIRCUIT SILICON MONOLITHIC

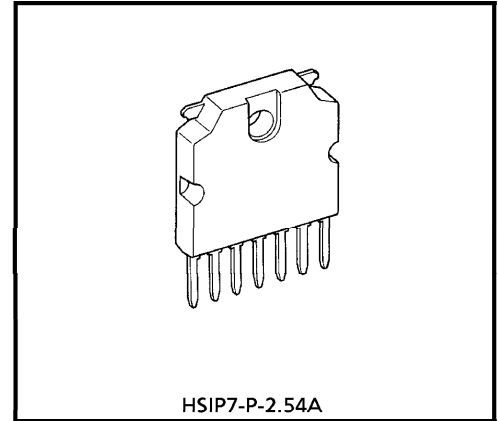
TA7252AP

5.9 W AUDIO POWER AMPLIFIER

The TA7252AP is audio power amplifier for consumer applications. It is designed for high power, low distortion and low noise. Since the package is a 7 pin SIP (Single Inline Package), it greatly simplifies construction of a power amplifier both in design and assembly. It is suitable for car radio power amplifier.

FEATURES

- Very Few External Parts
- High Power
 - : $P_{OUT} (1) = 5.9 \text{ W (Typ.)}$
($V_{CC} = 13.2 \text{ V}$, $f = 1 \text{ kHz}$, $THD = 10\%$, $R_L = 4 \Omega$)
 - $P_{OUT} (2) = 9.6 \text{ W (Typ.)}$
($V_{CC} = 13.2 \text{ V}$, $f = 1 \text{ kHz}$, $THD = 10\%$, $R_L = 2 \Omega$)
- Low Distortion
 - : $THD = 0.07\% \text{ (Typ.)}$
($V_{CC} = 13.2 \text{ V}$, $f = 1 \text{ kHz}$, $P_{OUT} = 0.5 \text{ W}$, $R_L = 4 \Omega$)
- Low Noise
 - : $V_{NO} (1) = 0.7 \text{ mV}_{rms} \text{ (Typ.)}$
($V_{CC} = 13.2 \text{ V}$, $R_L = 4 \Omega$, $G_V = 53 \text{ dB}$, $R_G = 10 \text{ k}\Omega$, $BW = 20 \text{ Hz} \sim 20 \text{ kHz}$)
 - $V_{NO} (2) = 0.4 \text{ mV}_{rms} \text{ (Typ.)}$
($V_{CC} = 13.2 \text{ V}$, $R_L = 4 \Omega$, $G_V = 53 \text{ dB}$, $R_G = 0$, $DIN \text{ Noise} : DIN45405$)
- Protector : Thermal Shut Down, Over Voltage Protection, Short Protection
- Operating Supply Voltage Range : $V_{CC} (opr.) = 9 \sim 18 \text{ V}$



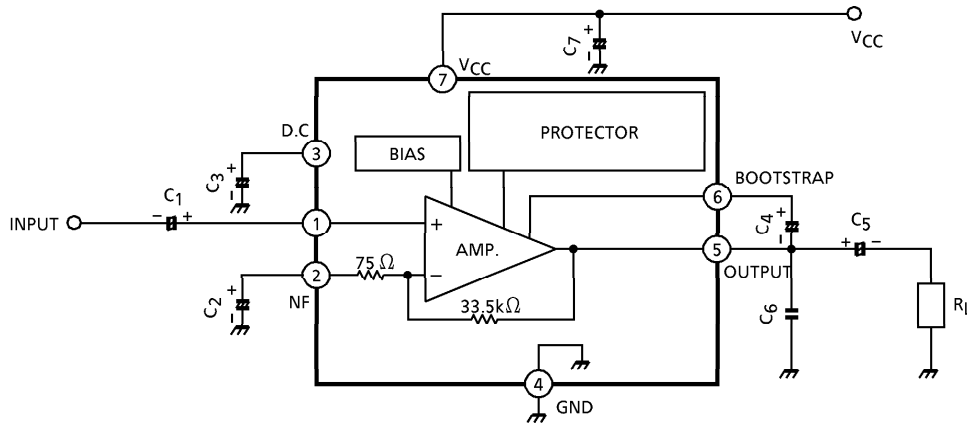
HSIP7-P-2.54A

Weight : 2.15 g (Typ.)

000707EBA1

- TOSHIBA is continually working to improve the quality and reliability of its products. Nevertheless, semiconductor devices in general can malfunction or fail due to their inherent electrical sensitivity and vulnerability to physical stress. It is the responsibility of the buyer, when utilizing TOSHIBA products, to comply with the standards of safety in making a safe design for the entire system, and to avoid situations in which a malfunction or failure of such TOSHIBA products could cause loss of human life, bodily injury or damage to property. In developing your designs, please ensure that TOSHIBA products are used within specified operating ranges as set forth in the most recent TOSHIBA products specifications. Also, please keep in mind the precautions and conditions set forth in the "Handling Guide for Semiconductor Devices," or "TOSHIBA Semiconductor Reliability Handbook" etc..
- The TOSHIBA products listed in this document are intended for usage in general electronics applications (computer, personal equipment, office equipment, measuring equipment, industrial robotics, domestic appliances, etc.). These TOSHIBA products are neither intended nor warranted for usage in equipment that requires extraordinarily high quality and/or reliability or a malfunction or failure of which may cause loss of human life or bodily injury ("Unintended Usage"). Unintended Usage include atomic energy control instruments, airplane or spaceship instruments, transportation instruments, traffic signal instruments, combustion control instruments, medical instruments, all types of safety devices, etc.. Unintended Usage of TOSHIBA products listed in this document shall be made at the customer's own risk.
- The products described in this document are subject to the foreign exchange and foreign trade laws.
- The information contained herein is presented only as a guide for the applications of our products. No responsibility is assumed by TOSHIBA CORPORATION for any infringements of intellectual property or other rights of the third parties which may result from its use. No license is granted by implication or otherwise under any intellectual property or other rights of TOSHIBA CORPORATION or others.
- The information contained herein is subject to change without notice.

BLOCK DIAGRAM



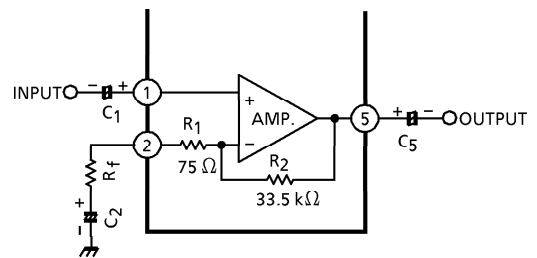
APPLICATION INFORMATION

1. Voltage gain adjustment

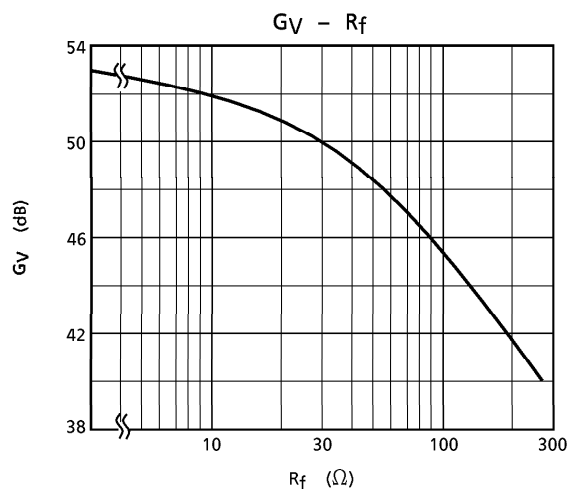
The closed loop voltage gain (G_V) is determined by R_1 , R_2 and R_f .

$$G_V = 20 \log \frac{R_1 + R_f + R_2}{R_1 + R_f}$$

When $R_f = 0$, $G_V = 53 \text{ dB}$ (Typ.) is given.



(Fig.1)



(Fig.2)

The recommended voltage gain is more than 40 dB.

2. Measures against oscillation

The purpose of capacitor : C_6 is to prevent oscillation.

This capacitor needs to be small temperature coefficient.

So ceramic capacitor is unsuitable.

A voltage gain less than 40 dB results occasionally in a plastic oscillation.

3. Precaution at print board design

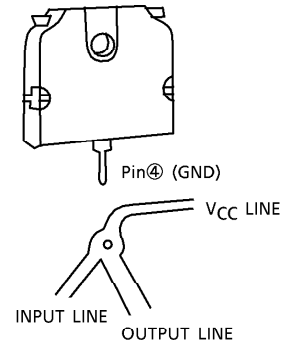
(1) GND line

The GND pin is only one in this IC.

When there is some common impedance between the input side GND and the output side GND, electrical characteristics as THD degrade.

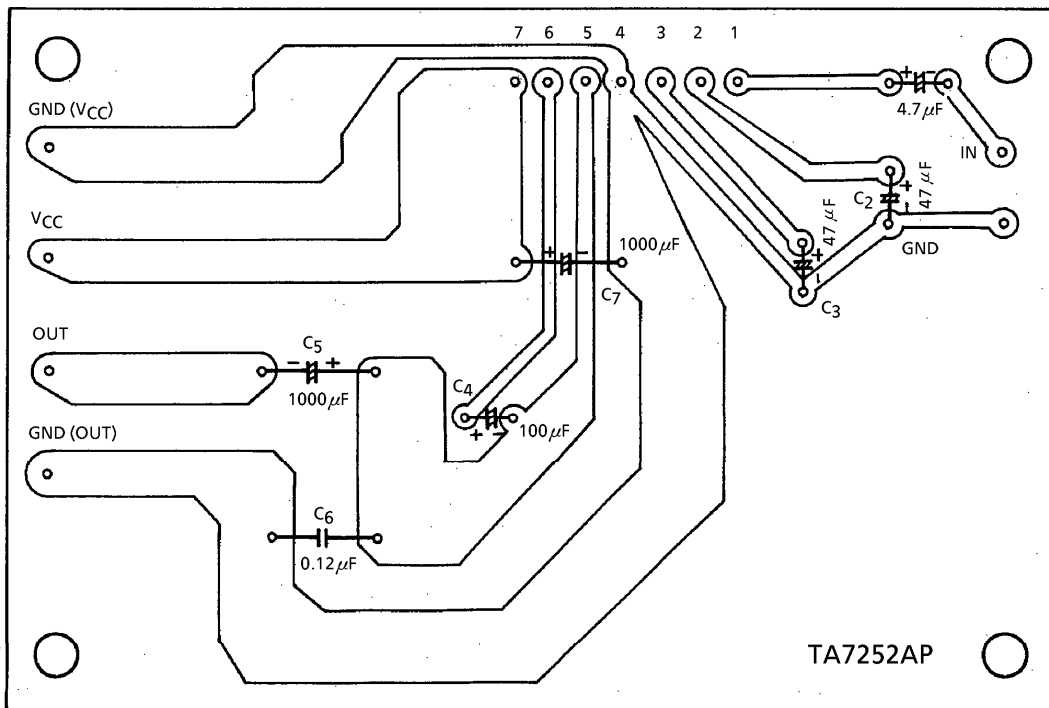
3 GND lines (input, output and V_{CC} sides) should be branched at the pin④ as shown (Fig.3).

(2) It is recommended to refer the standard print board.



(Fig.3)

STANDARD P.C.B.



MAXIMUM RATINGS (Ta = 25°C)

CHARACTERISTIC	SYMBOL	RATING	UNIT
Peak Supply Voltage (0.2 s)	V _{CC} (surge)	48	V
DC Supply Voltage	V _{CC} (DC)	25	V
Operating Supply Voltage	V _{CC} (opr)	18	V
Output Current (Peak)	I _O (peak)	4.5	A
Power Dissipation	P _D	15	W
Operating Temperature	T _{opr}	-30~75	°C
Storage Temperature	T _{stg}	-55~150	°C

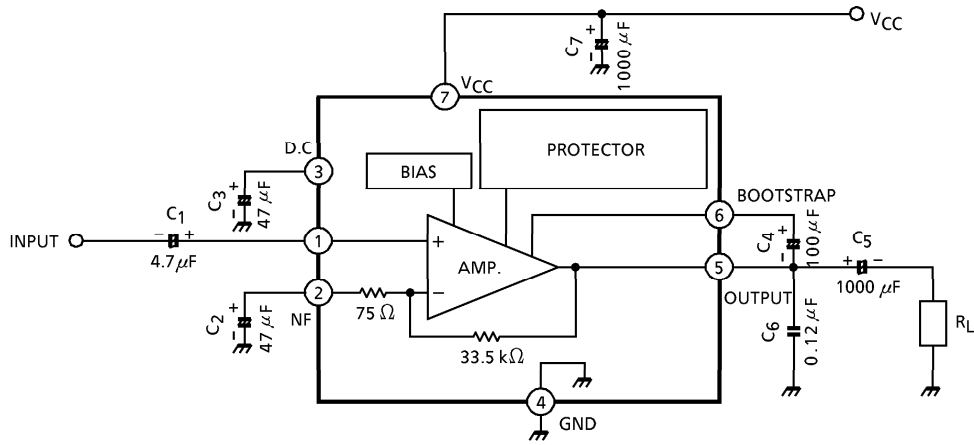
ELECTRICAL CHARACTERISTICS(Unless otherwise specified, V_{CC} = 13.2 V, R_L = 4 Ω, R_g = 600 Ω, f = 1 kHz, Ta = 25°C)

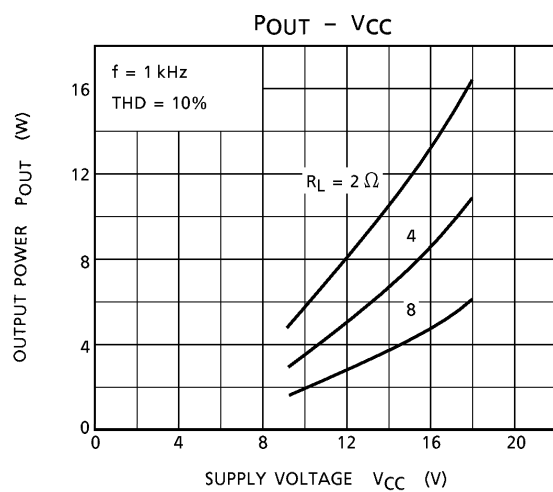
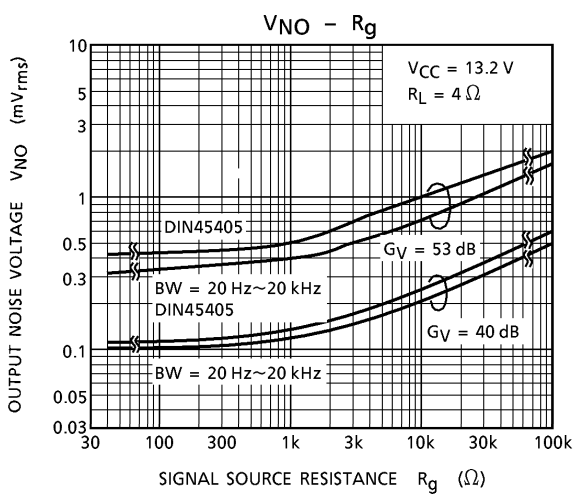
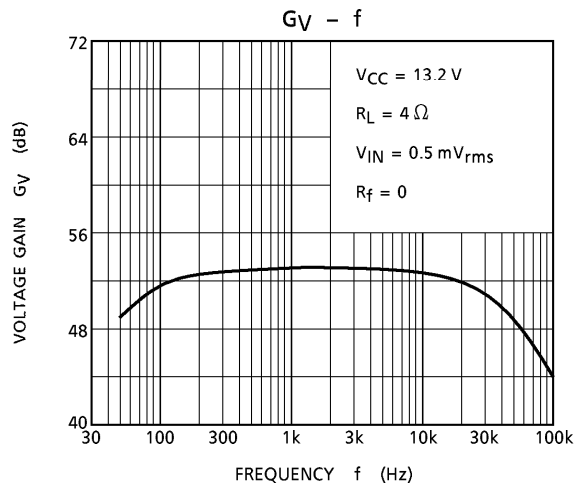
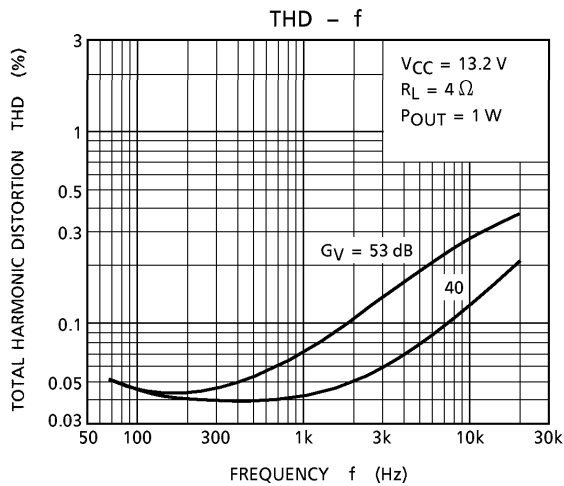
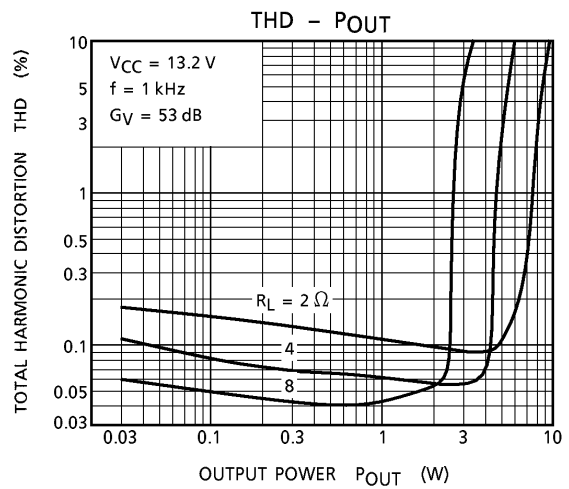
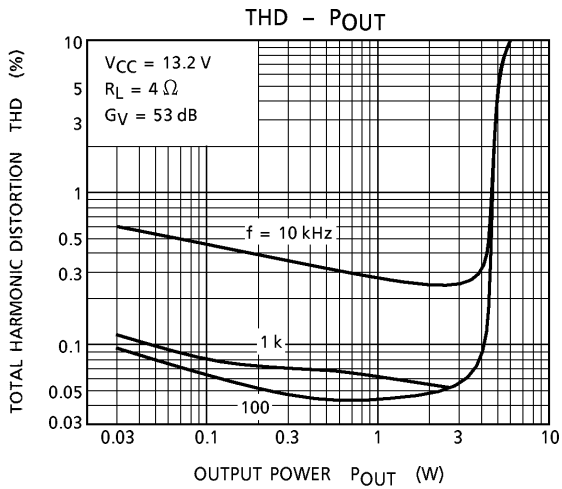
CHARACTERISTIC	SYMBOL	TEST CIR-CUIT	TEST CONDITION	MIN.	TYP.	MAX.	UNIT
Quiescent Current	I _{CCQ}	—	V _{IN} = 0	—	35	3.5	mA
Output Power	P _{OUT} (1)	—	THD = 10%	5.0	5.9	—	W
	P _{OUT} (2)	—	THD = 10%, R _L = 2 Ω	—	9.6	—	
Total Harmonic Distortion	THD (1)	—	P _{OUT} = 0.5 W	—	0.07	0.5	%
	THD (2)	—	P _{OUT} = 1 W, R _L = 2 Ω	—	0.10	—	
Output Noise Voltage	V _{NO} (1)	—	R _g = 10 kΩ, G _V = 53 dB BW = 20 Hz~20 kHz	—	0.7	1.8	mV _{rms}
	V _{NO} (2)	—	R _g = 0, G _V = 53 dB DIN noise (DIN45405) filter	—	0.4	—	
Voltage Gain	G _V	—	V _{IN} = 0.5 mV _{rms}	51	53	55	dB
Ripple Rejection Ratio	R.R.	—	R _g = 0, f _{ripple} = 100 Hz V _{ripple} = 0.775 V _{rms} (0 dBm)	—	-62	-50	dB
Input Resistance	R _{IN}	—	f = 1 kHz	—	30	—	kΩ

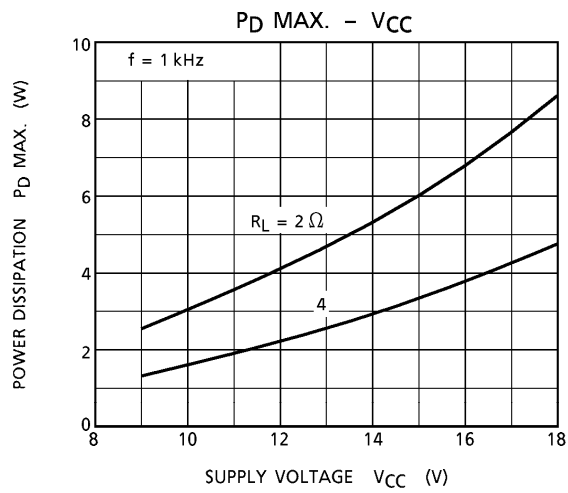
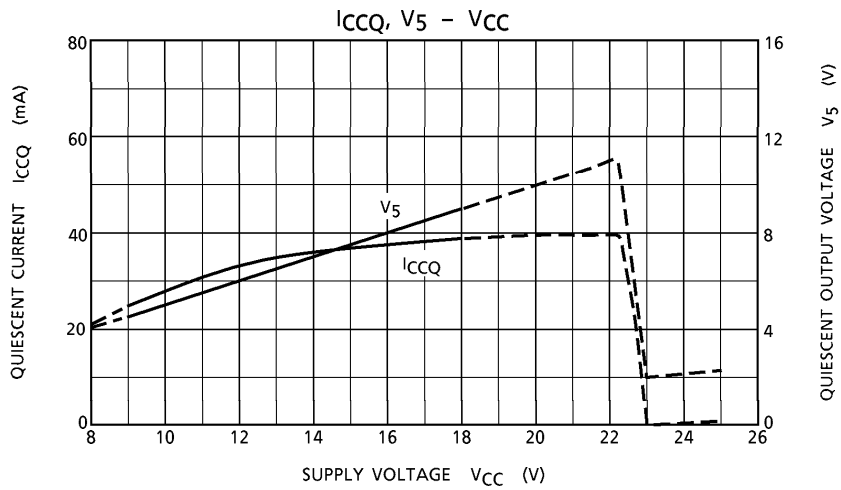
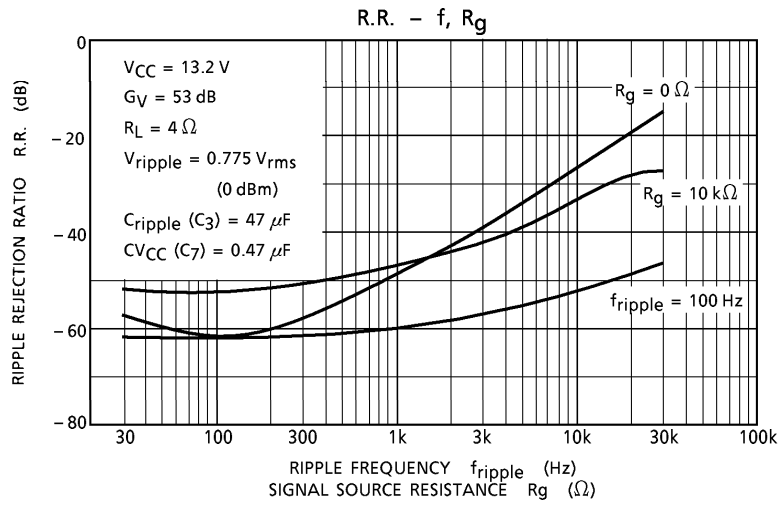
TYP. DC VOLTAGE OF EACH TERMINAL(V_{CC} = 13.2 V, Ta = 25°C)

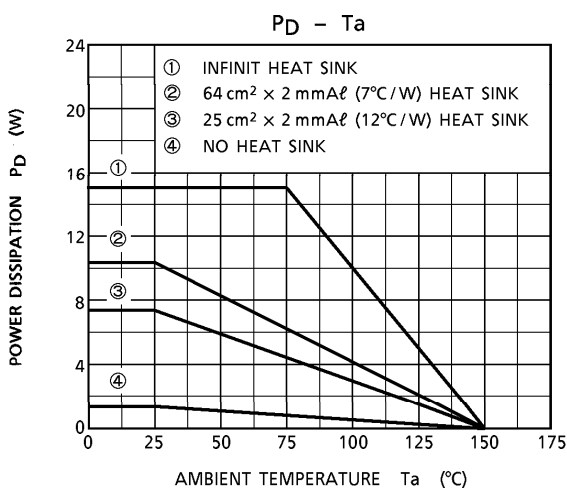
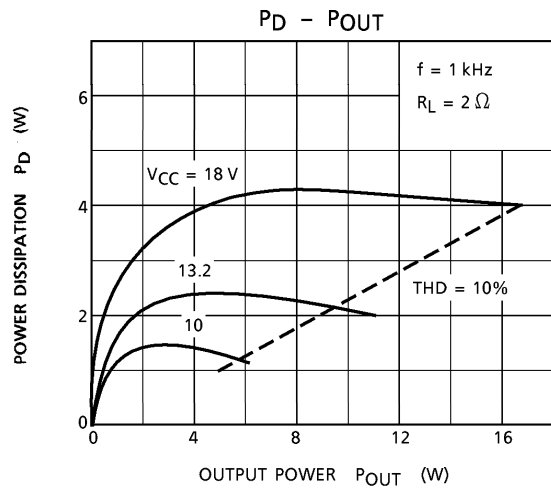
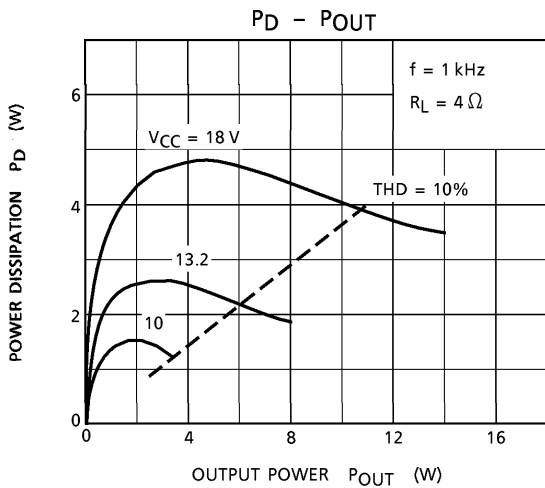
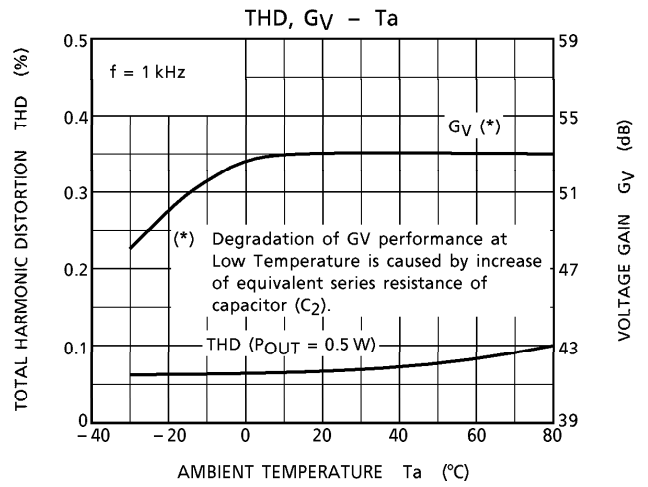
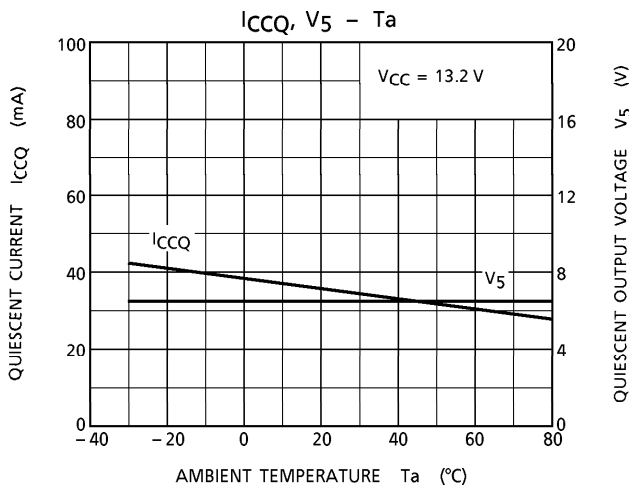
TERMINAL No.	1	2	3	4	5	6	7
DC Voltage (V)	1.5	1.5	6.6	GND	6.6	12.6	V _{CC}

TEST CIRCUIT



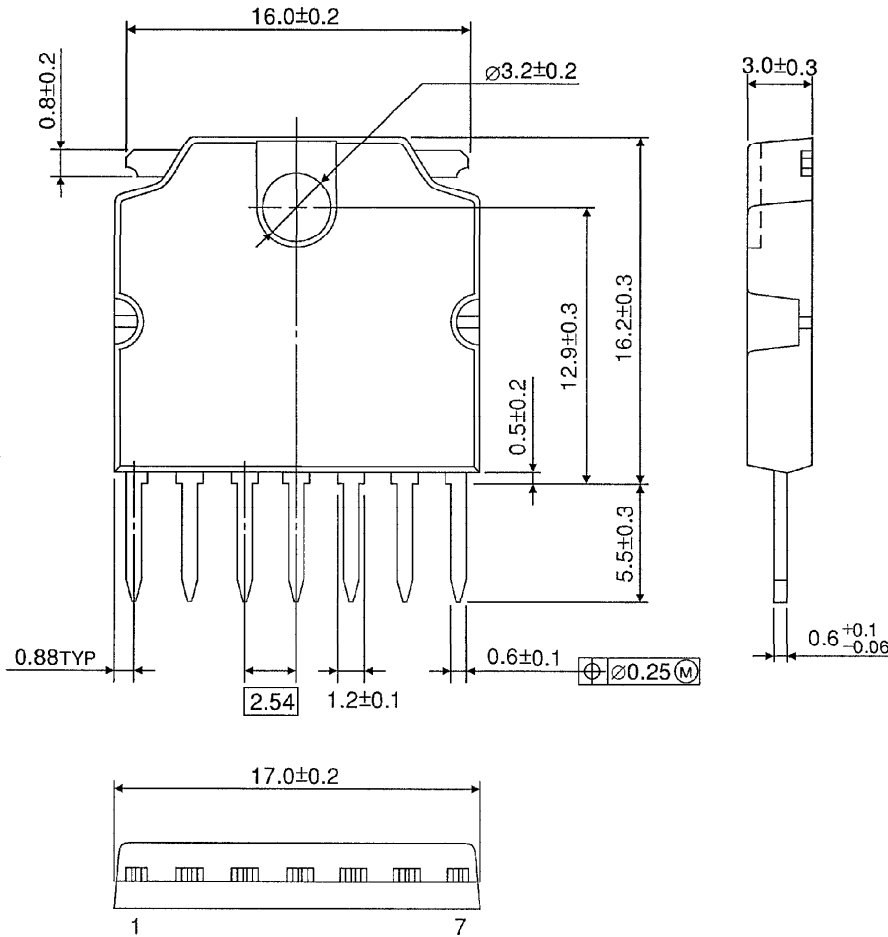






PACKAGE DIMENSIONS
HSIP7-P-2.54A

Unit : mm



Weight : 2.15 g (Typ.)